

Pril 1

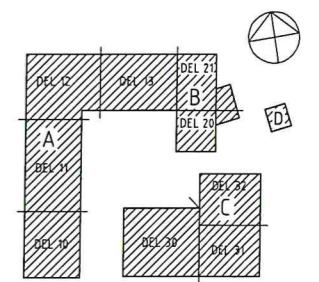
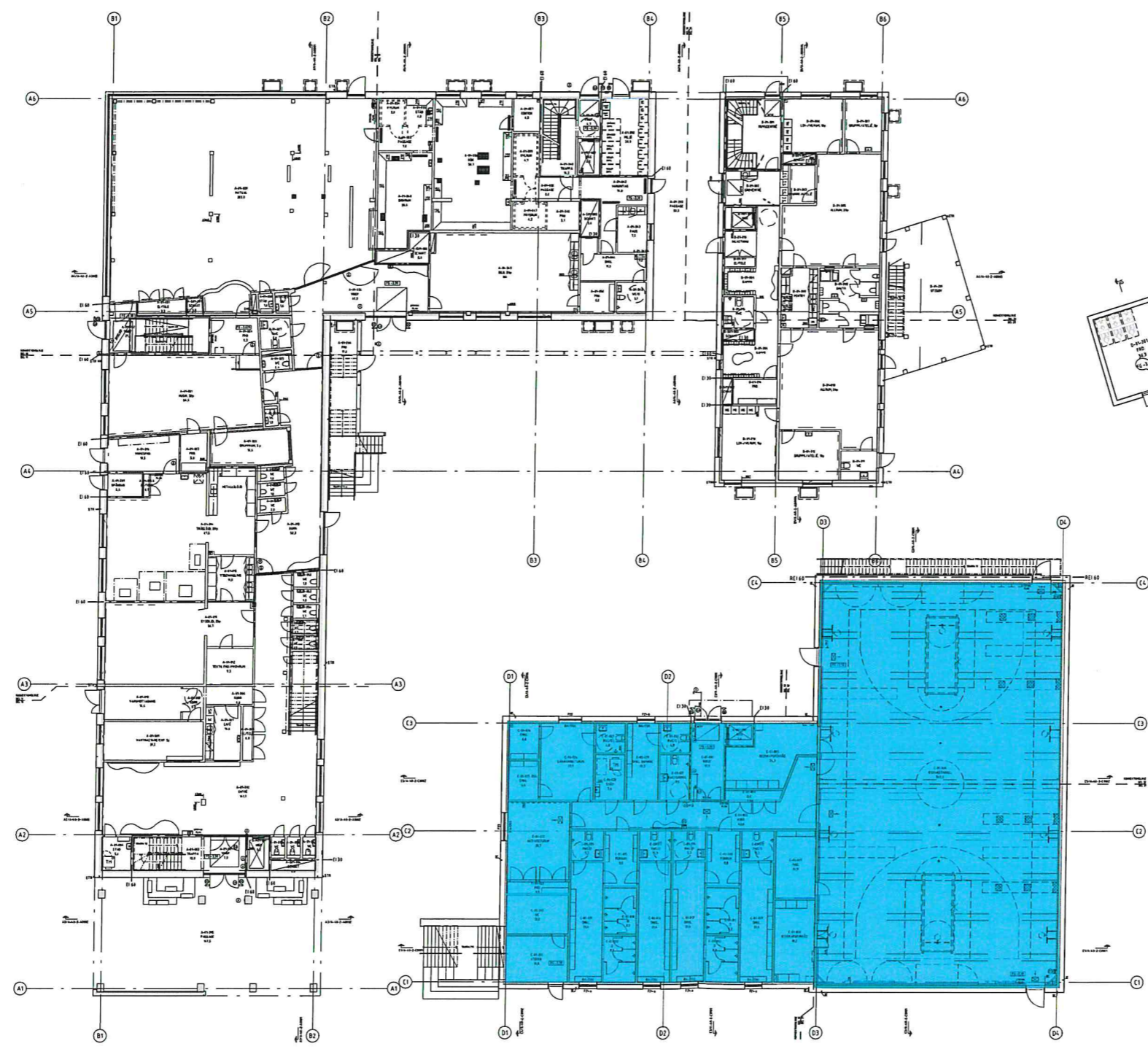
HÄNVISNINGAR
ALLMÄNNA ANVISNINGAR SAMT FÖRKLARINGAR SE RITNING
A-4.0-1-A0110

ÖVERSIKTSRITNING ÄR EN INFORMATIONSRITNING.
REVIDERINGAR REDOVISAS PÅ MÄTTPLANER.

MÄTTPLANER SE RITNINGAR:
A-4.0-1-A0110
A-4.0-1-A0111
A-4.0-1-A0112
A-4.0-1-A0113

A-4.0-1-B0120
A-4.0-1-B0121

A-4.0-1-C0130
A-4.0-1-C0131
A-4.0-1-C0132



XREF: \A-4.0-P-0100-XXXX-B.dwg
 \A-4.0-P-0200-XXXX-A.dwg
 \A-4.0-P-0300-XXXX-A.dwg
 \A-4.0-P-0400-XXXX-A.dwg
 \A-4.0-P-0500-XXXX-D.dwg
 \A-4.0-P-0600-XXXX-C.dwg
 \A-4.0-P-0700-XXXX-A.dwg
 \A-4.0-P-0800-XXXX-A.dwg
 \A-4.0-P-0900-XXXX-A.dwg
 \A-4.0-P-1000-XXXX-A.dwg
 \A-4.0-P-1100-XXXX-A.dwg
 \A-4.0-P-1200-XXXX-A.dwg
 \A-4.0-P-1300-XXXX-A.dwg
 \A-4.0-P-1400-XXXX-A.dwg
 \A-4.0-P-1500-XXXX-A.dwg
 \A-4.0-P-1600-XXXX-A.dwg
 \A-4.0-P-1700-XXXX-A.dwg
 \A-4.0-P-1800-XXXX-A.dwg
 \A-4.0-P-1900-XXXX-A.dwg
 \A-4.0-P-2000-XXXX-A.dwg
 \A-4.0-P-2100-XXXX-A.dwg
 \A-4.0-P-2200-XXXX-A.dwg
 \A-4.0-P-2300-XXXX-A.dwg
 \A-4.0-P-2400-XXXX-A.dwg
 \A-4.0-P-2500-XXXX-A.dwg
 \A-4.0-P-2600-XXXX-A.dwg
 \A-4.0-P-2700-XXXX-A.dwg
 \A-4.0-P-2800-XXXX-A.dwg
 \A-4.0-P-2900-XXXX-A.dwg
 \A-4.0-P-3000-XXXX-A.dwg
 \A-4.0-P-3100-XXXX-A.dwg
 \A-4.0-P-3200-XXXX-A.dwg
 \A-4.0-P-3300-XXXX-A.dwg
 \A-4.0-P-3400-XXXX-A.dwg
 \A-4.0-P-3500-XXXX-A.dwg
 \A-4.0-P-3600-XXXX-A.dwg
 \A-4.0-P-3700-XXXX-A.dwg
 \A-4.0-P-3800-XXXX-A.dwg
 \A-4.0-P-3900-XXXX-A.dwg
 \A-4.0-P-4000-XXXX-A.dwg
 \A-4.0-P-4100-XXXX-A.dwg
 \A-4.0-P-4200-XXXX-A.dwg
 \A-4.0-P-4300-XXXX-A.dwg
 \A-4.0-P-4400-XXXX-A.dwg
 \A-4.0-P-4500-XXXX-A.dwg
 \A-4.0-P-4600-XXXX-A.dwg
 \A-4.0-P-4700-XXXX-A.dwg
 \A-4.0-P-4800-XXXX-A.dwg
 \A-4.0-P-4900-XXXX-A.dwg
 \A-4.0-P-5000-XXXX-A.dwg
 \A-4.0-P-5100-XXXX-A.dwg
 \A-4.0-P-5200-XXXX-A.dwg
 \A-4.0-P-5300-XXXX-A.dwg
 \A-4.0-P-5400-XXXX-A.dwg
 \A-4.0-P-5500-XXXX-A.dwg
 \A-4.0-P-5600-XXXX-A.dwg
 \A-4.0-P-5700-XXXX-A.dwg
 \A-4.0-P-5800-XXXX-A.dwg
 \A-4.0-P-5900-XXXX-A.dwg
 \A-4.0-P-6000-XXXX-A.dwg
 \A-4.0-P-6100-XXXX-A.dwg
 \A-4.0-P-6200-XXXX-A.dwg
 \A-4.0-P-6300-XXXX-A.dwg
 \A-4.0-P-6400-XXXX-A.dwg
 \A-4.0-P-6500-XXXX-A.dwg
 \A-4.0-P-6600-XXXX-A.dwg
 \A-4.0-P-6700-XXXX-A.dwg
 \A-4.0-P-6800-XXXX-A.dwg
 \A-4.0-P-6900-XXXX-A.dwg
 \A-4.0-P-7000-XXXX-A.dwg
 \A-4.0-P-7100-XXXX-A.dwg
 \A-4.0-P-7200-XXXX-A.dwg
 \A-4.0-P-7300-XXXX-A.dwg
 \A-4.0-P-7400-XXXX-A.dwg
 \A-4.0-P-7500-XXXX-A.dwg
 \A-4.0-P-7600-XXXX-A.dwg
 \A-4.0-P-7700-XXXX-A.dwg
 \A-4.0-P-7800-XXXX-A.dwg
 \A-4.0-P-7900-XXXX-A.dwg
 \A-4.0-P-8000-XXXX-A.dwg
 \A-4.0-P-8100-XXXX-A.dwg
 \A-4.0-P-8200-XXXX-A.dwg
 \A-4.0-P-8300-XXXX-A.dwg
 \A-4.0-P-8400-XXXX-A.dwg
 \A-4.0-P-8500-XXXX-A.dwg
 \A-4.0-P-8600-XXXX-A.dwg
 \A-4.0-P-8700-XXXX-A.dwg
 \A-4.0-P-8800-XXXX-A.dwg
 \A-4.0-P-8900-XXXX-A.dwg
 \A-4.0-P-9000-XXXX-A.dwg
 \A-4.0-P-9100-XXXX-A.dwg
 \A-4.0-P-9200-XXXX-A.dwg
 \A-4.0-P-9300-XXXX-A.dwg
 \A-4.0-P-9400-XXXX-A.dwg
 \A-4.0-P-9500-XXXX-A.dwg
 \A-4.0-P-9600-XXXX-A.dwg
 \A-4.0-P-9700-XXXX-A.dwg
 \A-4.0-P-9800-XXXX-A.dwg
 \A-4.0-P-9900-XXXX-A.dwg
 \A-4.0-P-10000-XXXX-A.dwg

LAGER: SB11

SKALA 1:200 (A1) 0 10 20

B	Enligt Ändrings-PM2-A	180524	AB
A	Enligt Ändrings-PM1-A	180523	AB
BET	ANT	ÄNDRINGEN AVSER	DATUM
			SSW

BYGGHANDLING

VÄSTRA VARVSSTADEN PROJEKT NR
 Nybyggnad skola, förskola, gymnastikhall 6D77
www.sydarkkonstruera.se

SYDARK KONSTRUERA
Ö TULLGATAN 3, 211 28 MALMÖ, SVERIGE
 TEL: 040 599400 FAX: 040 496260

FORETAG	Sydark Konstruera AB	TEL	040-59 94 00
UPPDRAGSNUMMER	15180	RITAD AV	RF/PK
		HANDLAGARE	Pernilla Knutson
DATUM	2018-01-29	REV DATUM	
		ANSVARIG	Helena Hammer

Kv Träförrådet 1, Malmö Stad
 ÖVERSIKTSPLAN
 PLAN 1, ENTRÉPLAN BYGGNAD A, B, C

ORIENTERINGSNUMMER	BYGGNAD	PLAN	DEL	UNDERGRUPP	DISCIPLIN
XXXX	ABC	01	00	4.0	A
SKALA	RITNINGNUMMER		BET		
1:200	A-4.0-1-0100		B		

PLO: 2018-05-28 12:28 G:\2018\PROJEKT 2015\15180 VÄSTRA VARVSSTADENS SKOLA O FÖRSKOLAN\BYGGHANDLINGAR\A-A-MODELL\A-4.0-P-0100-XXXX-A.DWG PERNILLA KNUTSON