
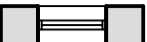
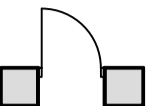
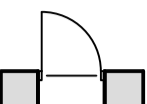
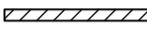




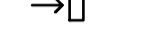
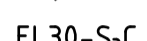


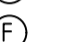

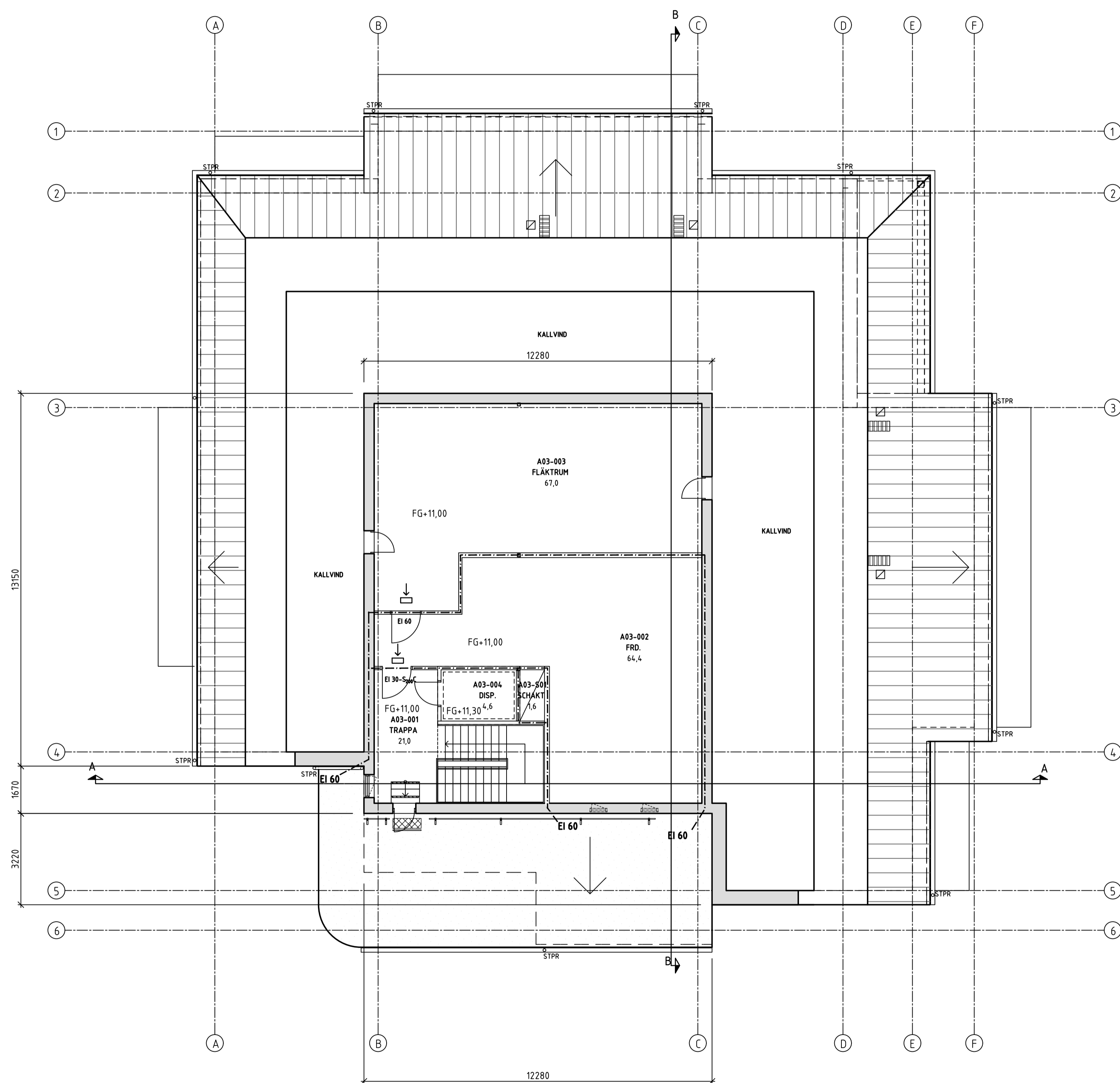
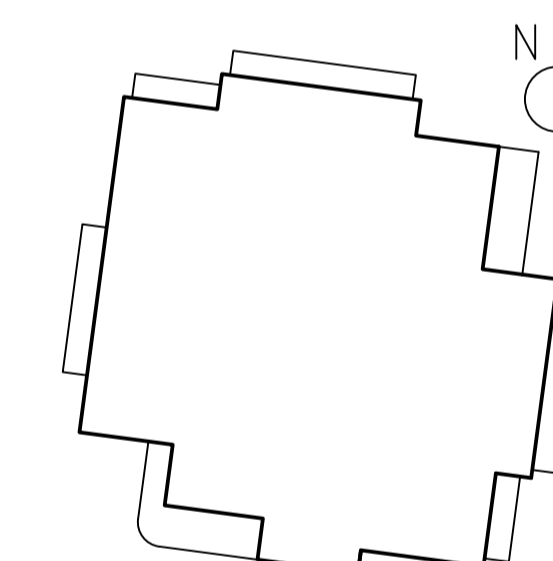


FÖRKLARINGAR

-  YTTERVÄGG
-  FÖNSTERÖPPNING
-  DÖRR
-  DÖRR MED GLASÖPPNING
-  INVÄNDIG BÄRANDE BETONGVÄGG
-  INVÄNDIG ICKEBÄRANDE LECAVÄGG
-  INVÄNDIG ICKEBÄRANDE REGELVÄGG
-  ÖPPNING I VÄGG
-  STÅLPELARE ENL. K
-  BRANDCELLSGRÄNS EI 60
-  GENOMLYST VÄGLEDANDE MARKERING
-  EFTERLYSAND E VÄGLEDANDE MARKERING
-  EI 30-S0C BRANDKLASS DÖRR (EXEMPEL)
-  FG+4.15 FÄRDIG GOLVNIVÅ (EXEMPEL)
-  +4.13 MARKNIVÅ (EXEMPEL)
-  ARMÄGSKONTAKT
-  DÖRRAUTOMATIK
-  FREESWING

BYA 699m<sup>2</sup> (DETALJPLAN TILLÅTER 700m<sup>2</sup>)

BTA Plan 1 680m<sup>2</sup>  
 Plan 2 664m<sup>2</sup>  
 Plan 3 182m<sup>2</sup>



SKALA 1:100 (A1) 0 5 10

BET	ANT	ÄNDRINGEN AVSER	DATUM	SEN
<b>FÖRFRÅGNINGSUNDERLAG</b>				
		<b>Malmö stad</b> Stadsfastigheter		
MÖLLEDAL LSS NYBYGGNAD				PROJEKT NR 5842
 <b>ARKITEKT GRUPPEN</b>				
FÖRETAG ARKITEKTGRUPPEN I MALMÖ AB		TEL 040-103 535		
UPPDRAGSNUMMER 201862-1	RITAD AV M ANELJUNG	HANDLÄGGARE M ANELJUNG		
DATUM 2020-09-30	REV. DATUM	ANSVARIG L KARUD		
PILOTEN 1, MALMÖ STAD PLAN 3				
OBJEKTSNUMMER 1755	BYGGNAD A	PLAN 03	DEL 40	UNDERGRUPP A
SKALA 1:100	RITNINGNUMMER A-40-1-300			BET