
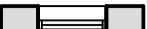
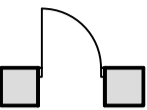
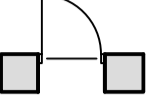

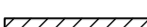

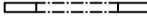





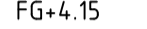

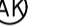




FÖRKLARINGAR

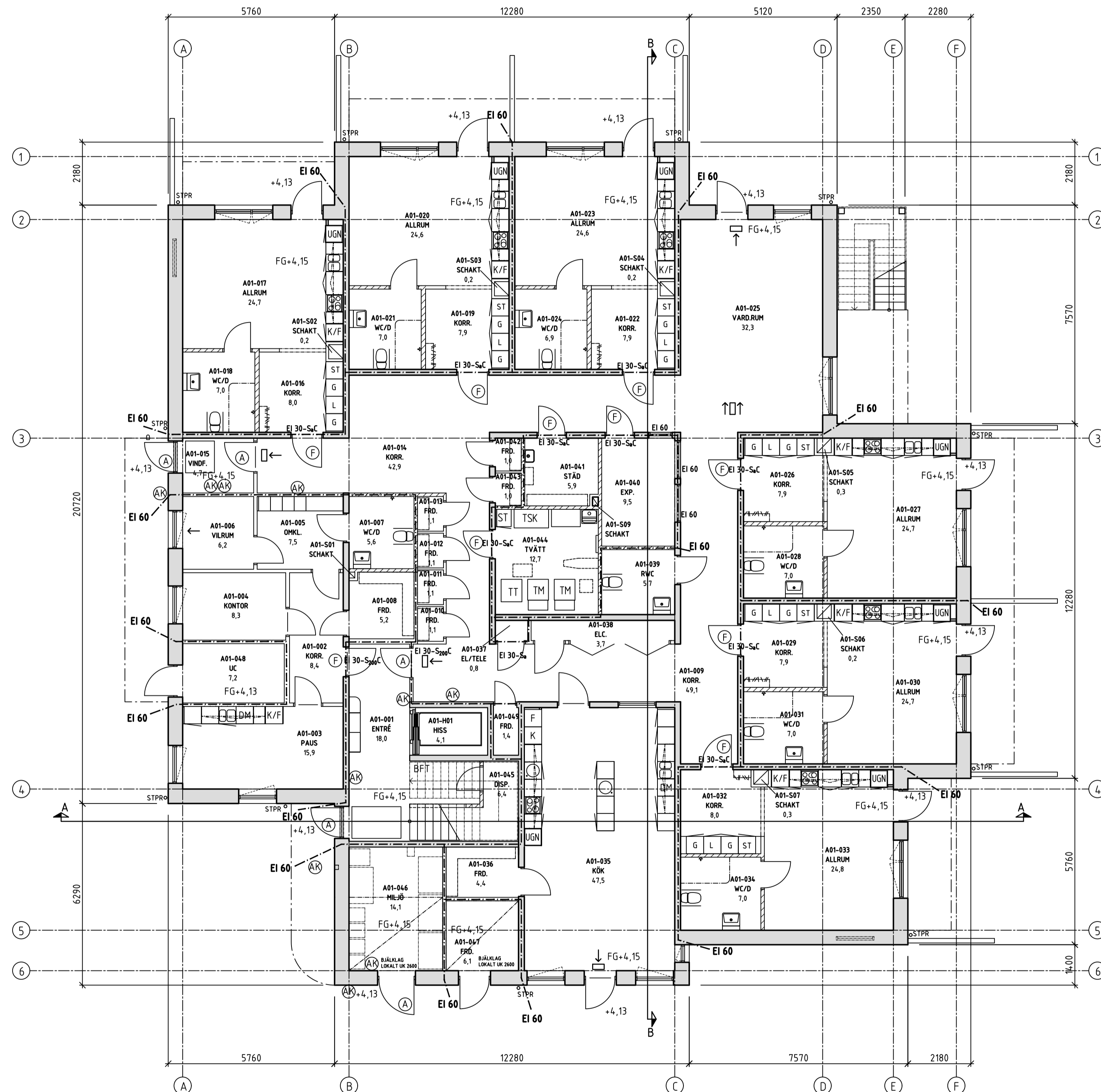
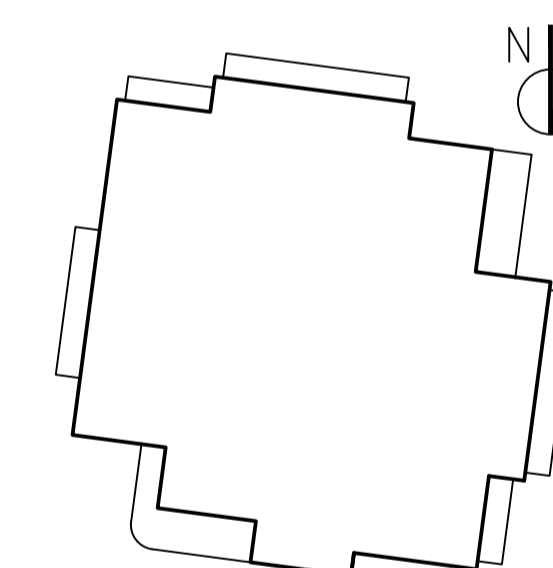
-  YTTERVÄGG
-  FÖNSTERÖPPNING
-  DÖRR
-  DÖRR MED GLASÖPPNING
-  INVÄNDIG BÄRANDE BETONGVÄGG
-  INVÄNDIG ICKEBÄRANDE LECAVÄGG
-  INVÄNDIG ICKEBÄRANDE REGELVÄGG
-  ÖPPNING I VÄGG
-  STÅLPELARE ENL K
-  BRANDCELLSGRÄNS EI 60
-  GENOMLYST VÄGLEDANDE MARKERING
-  EFTERLYSANDE VÄGLEDANDE MARKERING
-  EI 30-S0C BRANDKLASS DÖRR (EXEMPEL)
-  FG+4.15 FÄRDIG GOLVnivÅ (EXEMPEL)
-  +4.13 MARKNivÅ (EXEMPEL)
-  ARMBÄGSKONTAKT
-  DÖRRAUTOMATIK
-  FREESWING

BYA 699m<sup>2</sup> (DETALJPLAN TILLÅTER 700m<sup>2</sup>)

BTA Plan 1 680m<sup>2</sup>  
Plan 2 664m<sup>2</sup>  
Plan 3 182m<sup>2</sup>

LÄGENHETER TOTALT 12 st (6st PLAN 1, 6st PLAN 2)  
VARJE LÄGENHET ÄR 39m<sup>2</sup> OCH LÄGENHETSFÖRRÅD  
FINNS I KORRIDOR (1m<sup>2</sup>/LÄGENHET)

FRAKTIONER MILJÖRUM  
RESTAVFALL 660 Lx2st  
PLASTFÖRPACKNINGAR 660 L  
PAPPERSFÖRPACKNINGAR 660 L  
MATAVFALL 240 L  
RETURPAPPER 140 L  
METALL 140 L  
OFÄRGAT GLAS 140 L  
FÄRGAT GLAS 140 L  
BATTERIHOLK



BET	ANT	ÄNDRINGEN AVSER	DATUM	SEN
<b>FÖRFRÅGNINGSUNDERLAG</b>				



MÖLLEDAL LSS NYBYGGNAD	PROJEKT NR 5842
---------------------------	--------------------



FÖRETAG ARKITEKTGRUPPEN I MALMÖ AB	TEL 040-103 535
UPPDRAGSNUMMER 201862-1	RITAD AV M ANELJUNG
DATUM 2020-09-30	HANDLÄGGARE M ANELJUNG
	ANSVARIG L KARUD

PILOTEN 1, MALMÖ STAD  
PLAN 1

OBJEKTSNUMMER 1755	BYGGNAD A	PLAN 01	DEL 40	UNDERGRUPP A	DISCIPLIN A
SKALA 1:100	RITINGSNUMMER A-40-1-100	BET			